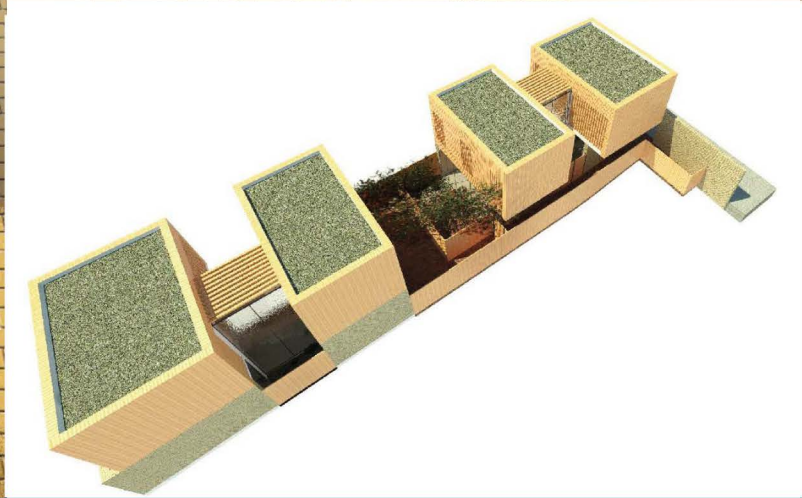


8c Morgan Street



Client:
LB Tower Hamlets

Start & Completion Date:
6th Aug 2018-15th Oct 2018

Services Provided:
Architectural Design
Building Surveying
CDM - Principal Designer

Project value:
£500,000.00

Contractor:
-

Blakeney Leigh were instructed by the London Borough of Tower Hamlets to provide a feasibility study and planning application design package for a vacant site in Mile End, East London.

The particular site was located in a Conservation Area residential neighbourhood, formed predominantly of two and three storeys terraced houses, therefore a similar setting was preferred. Presenting both a challenge and a design opportunity, the new building had to be particular and outstanding. It had to enhance the street scene and add an interesting feature to the neighbourhood. The site presented the additional challenge of overlooking from and to all sides, as the site being narrow and long, protruded far into the building island and was surrounded on all four sides by terrace houses, therefore detailed attention had to be drawn to this issue.

We were able to position two similar 3 bedroom houses on the site. All rooms were facing into private gardens and courtyards, leaving no window openings on the outside walls. Windows on the first floor were additionally protected from overlooking with shades and frosted glass, but still allowing plenty of sunlight to penetrate all habitable rooms.

