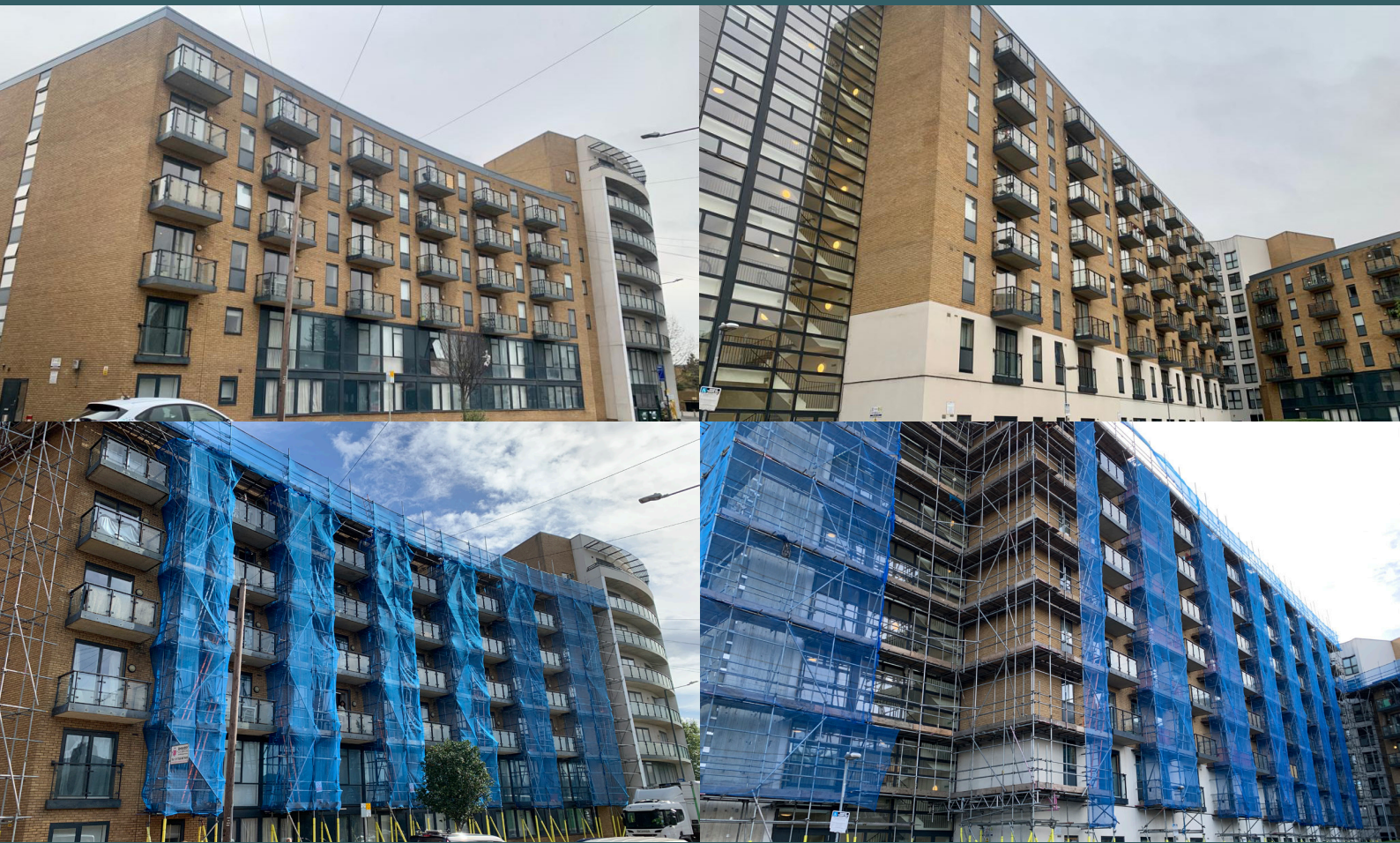


Reed House, Plough Lane SW19

Cladding Remediation



Client:
Kinleigh, Folkard & Hayward

Duration:
36 weeks

Services Provided:
Project Manager
CDM-Principal Designer
Cost Consultant

Project Value:
£900k

Contractor:
Engie

Blakeney Leigh were instructed to prepare a specification of works to remediate Reed House on the Plough Lane residential development. The works consisted in the removal of ACM cladding, phenolic insulation and spandrel panels, and replacing these elements with Euroclass A1 rated external cladding panels and associated stone wool insulation.

The project was funded by the Government's BSF programme for the remediation of unsafe cladding systems. Blakeney Leigh were crucial in the application process to secure full funding for this building with a height of over 18m.

The project was completed on time and within budget.

