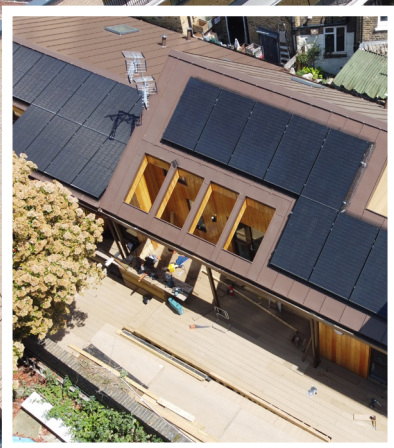


# Royal Hill, Greenwich, SE10

## New Build Social Housing for Adults with Learning Difficulties



Client:  
Royal Borough of Greenwich

Duration:  
52 Weeks

Services Provided:  
- Employers Agent  
- Cost Consultant  
- Quantity Surveyor  
- Clerk of Works  
- Design Approver and H&S Advisor

Project Value:  
£3,500,000.00

Contractor:  
Alexander James Contracts Ltd.

This project is a part of Royal Borough of Greenwich Contract as part of their ambitious promise to deliver 750nr council homes.

Royal Hill provides a total of 6 units, 5no self-contained 1 bed flats and 1 multi occupancy three-bedroom flat. The site was a former police car park sighted over a historic infilled railway embankment. The site is the tightest infill project we have worked on with residential and commercial neighbours bounding all sides. These properties are managed by the Royal Borough of Greenwich and boast Net Zero Carbon credentials meaning users of the homes will have minimal energy costs from the Solar PV, ASHP, and MVHR systems utilised for powering and heating the property.

The dwellings are a mixture of M4(3) and M4(2) meaning they are adapted or full adaptable for the users. Royal Borough of Greenwich are hoping these homes will allow adults with learning difficulties to experience lone living in a controlled environment in the hope they can eventually move to non-assisted living conditions.

